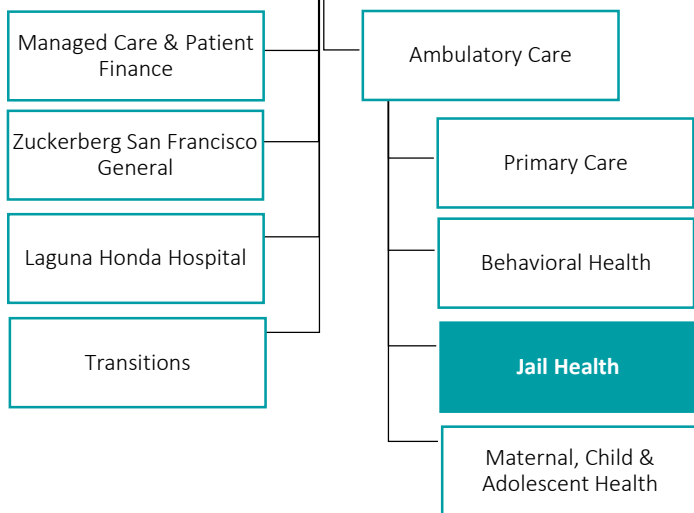
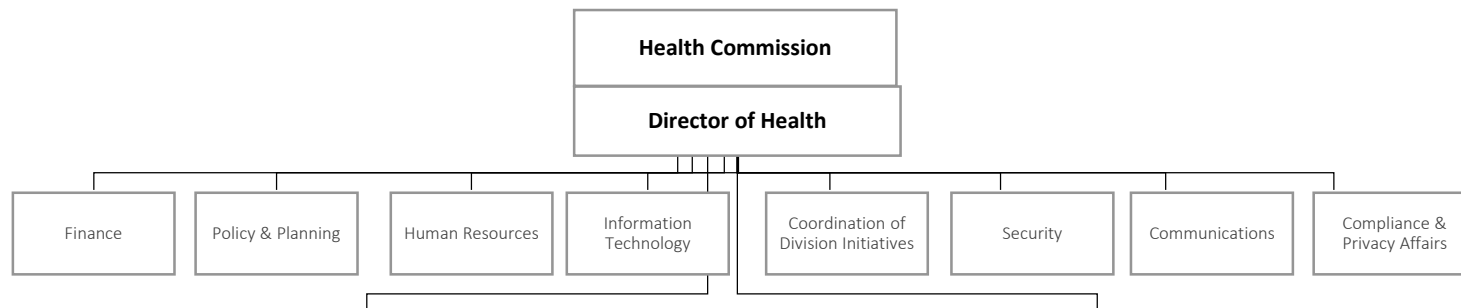
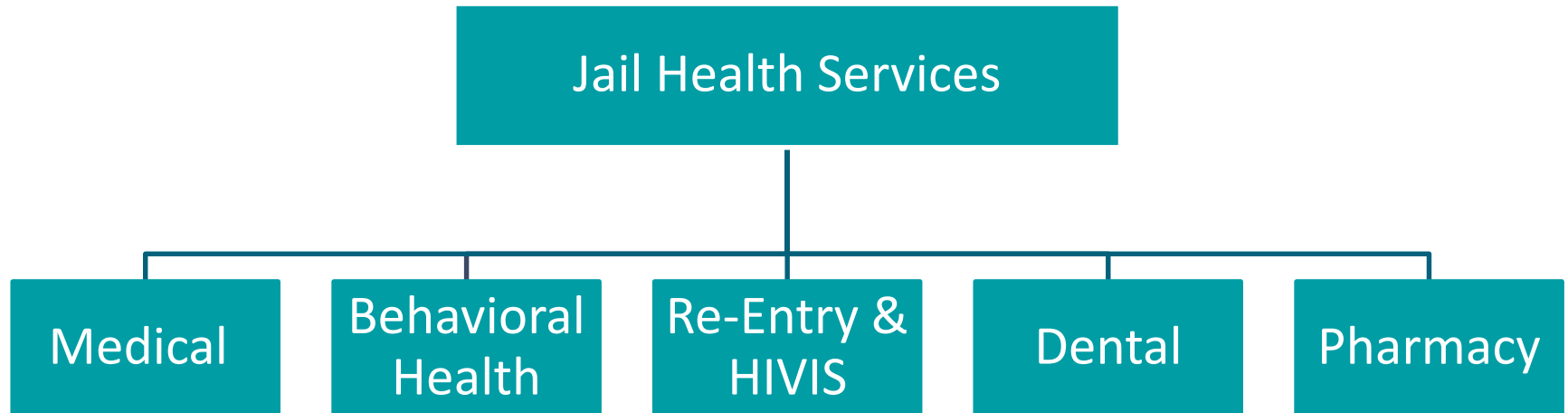




# Jail Health Services

**Lisa A. Pratt, MD, MPH**  
Director / Medical Director  
Jail Health Services





## FY 2014-2015 Operating Budget

Salaries & Benefits	23,967,272
Professional & Specialized Services	3,641,078
▪ Includes BHS, X-RAY, Podiatry, UCSF OBGYN	
Pharmaceuticals	2,478,792
Material & Supplies	624,680
Other Expenses	297,102
	\$ 31,008,924

## 163 FTE

Nurse Managers	3.0	Psychologist	1.0
RNs	61.6	Therapists	20.0
LVNs	25.0	Counselors	4.0
MD/NPs	12.6		
Pharmacists	3.0	Administration	4.0
Pharm Technicians	5.0	Support Staff	14.0
Dentist	1.4		

Total unique patients in 2015: **15,000**

Current average daily census: **1,250**

- 86% of people in SF Jail have not been sentenced
- 14% are serving a sentence
- 7-14% Seriously mentally ill

Average length of stay

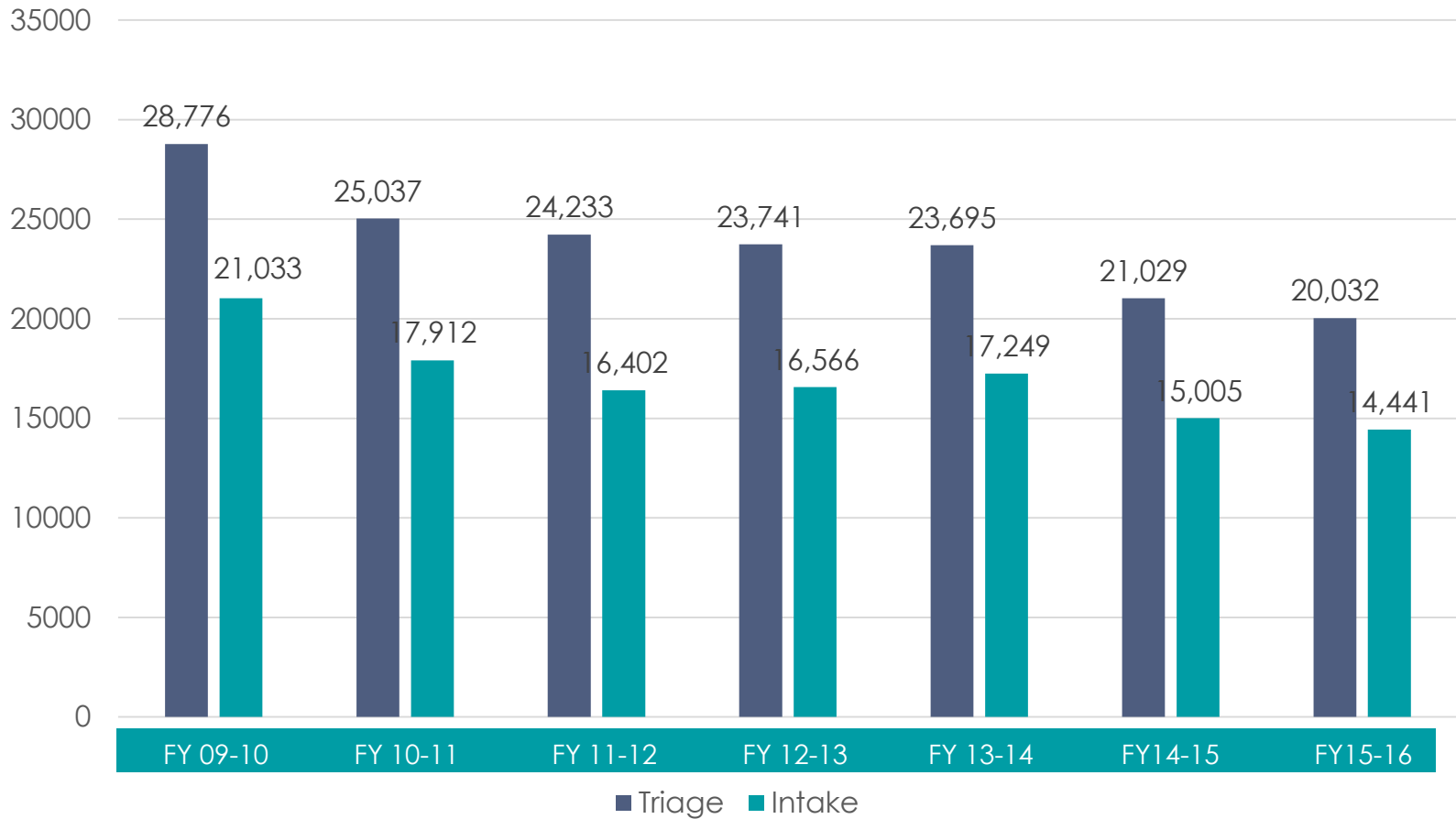
- 65% less than 7 days
- 18% 7-30 days
- 16% 30 days or more

Sex and Gender Identity

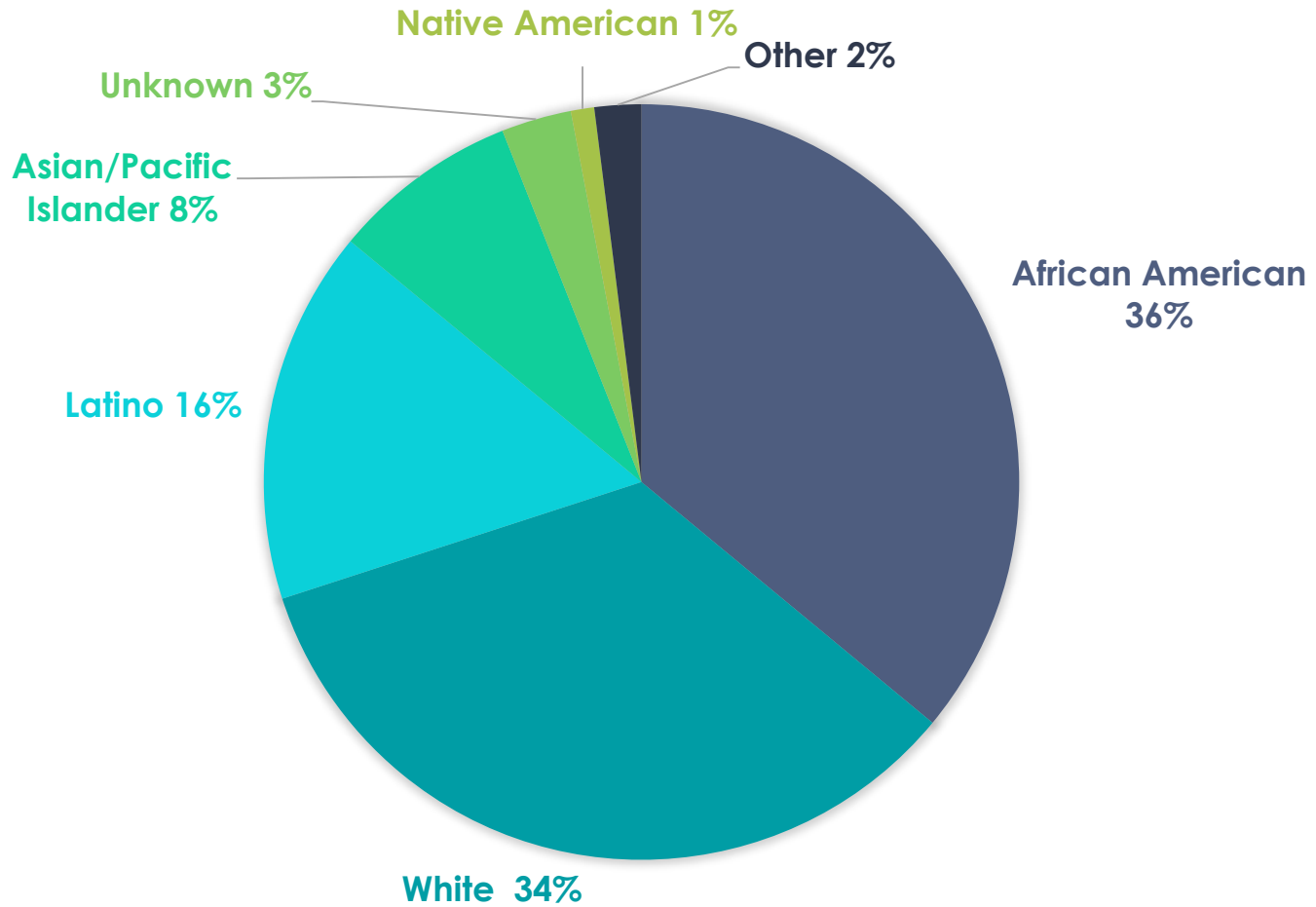
- 86% are men; 14% are women (SFSD)
- 78% men, 13% women, 10% declined to answer (JHS)
  - Trans Women 61, Trans Men 17

Source: Jail Information Management System

# SF Jail Entry 2009-2016



# Race/Ethnicity 2015





## **Triage →**

- Acute: ZSFG ED/PES

## **Intake →**

- Subacute: BHS evaluation, psychiatry referral, substance use detox, primary care -> specialized housing
- Chronic care: primary care, psychiatry and mental health services, dental services

## **Referral →**

- RN assessment

## Medical Services

Triage	20,333
- ED Referrals	613
Intake screening	14,417
Nursing visits	31,144
Clinician visits	25,187
Dental visits	2,016
Pharmacy fills	194,000

- Evaluation
- Evidence-based individual and group therapy
- Medication management
- Assessment and referrals to community treatment
- Substance abuse assessment and treatment
- Reentry Services
- Crisis Intervention

## Stabilization and Reentry:

▪ Comprehensive mental health evaluation	6,567
▪ Psychiatry visits	4,258
▪ Group therapy visits	27,397
▪ Individual therapy visits	18,810
▪ Reentry planning visits	6,894

## Crisis Intervention:

▪ 5150 hold at the jail	465
▪ Admission to 7L	330

## **Screening and Prevention 2015**

- 8,900 tests done
- PrEP and PEP overdose education
- Condom and naloxone distribution

## **Center of Excellence 2015**

- HIV Medical Care – 339 patients
- Medical Case Management – 127 patients
  - Psychosocial assessment
  - Medication adherence support
  - Discharge planning

## **Substance Use Treatment**

- Methadone and Buprenorphine

## **Prenatal, Intrapartum and Post-Partum Support**

- UCSF OB/GYNs
- Birth Justice Project

## **Clinical Pharmacist-Managed Clinics**

## **Hepatitis C treatment with direct-acting antivirals**

## **Reentry Programming**

- Misdemeanor Behavioral Health Court
- Mentoring and peer support program (MAPS)
- Transitional Age Youth services

## **Medication Management**

- Continuity of medication
- Increased number of prescribers

## **Stratification Tools**

- Screening instrument to determine level of care
- Validated suicide assessment tool

## **Psychiatric Sheltered Living Units**

- Strengthen stabilization and community transition programs
- Develop individual treatment plans for group therapy

- Expand public health surveillance and treatment
- Initiate and coordinate medication-based relapse prevention therapies
- Expand HIVIS model to medically complex patients
  - Medical case management and supported continuity
- Integrate HIVIS and BHS re-entry programs
  - Sharing resources and best practices
- Formalize linkage opportunities across healthcare and social service entities